

Graphics runtime and **PORTAL**

Graphics runtime and **PORTAL**

Introduction

The Graphics Software Suite has been designed with user-friendliness as a major design criterion. Initial set-up is made via the Graphics Design software. At runtime the operator can choose which Ground Plan or Floor Plan to display.

Thereafter the operating instructions are limited to responding to any alarm displays, displaying transactions, and others as listed below.

The Graphics runtime version has less functionality in Portal as it did in IXP400. Impro will be looking at designing a newer version of this in time for Access Portal and therefore as an interim have allowed users to use this with Access Portal as a free version with no license.

The software will only need to be installed in order to make this work with Portal.

A software installation called Portal Plugin/Add-on Manager will need to be installed for this functionality.

This software effectively installs:

- Reader plugin manager
- Integration manager
- Card designer
- Graphics runtime

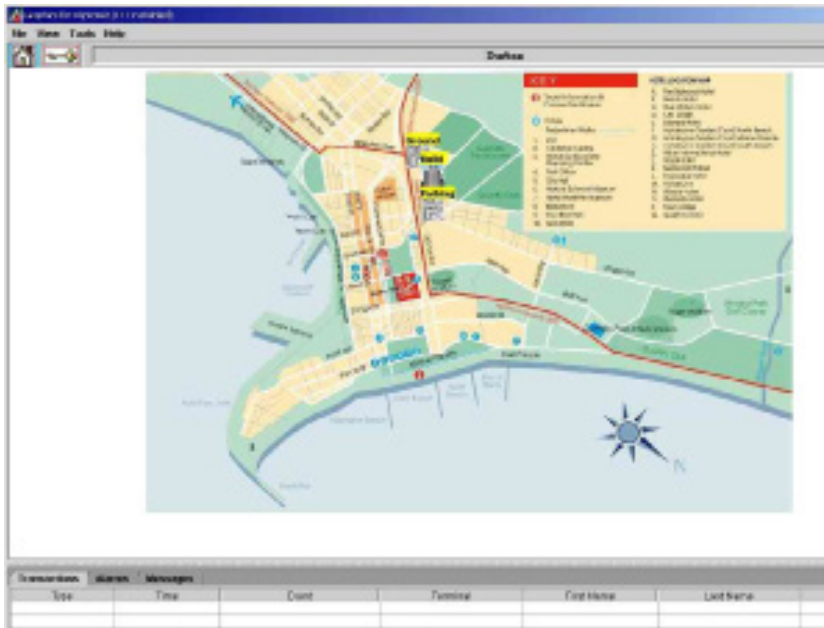
There are tick box options which allow the user to choose the desired install required.

System startup

At startup, the software will locate the system database which is controlled by the Portal API. It will then allow a user to log-on with a Login name and password.

The Portal database will be read through the API. You can find the Graphics runtime and designer in the Portal\Bin directory.

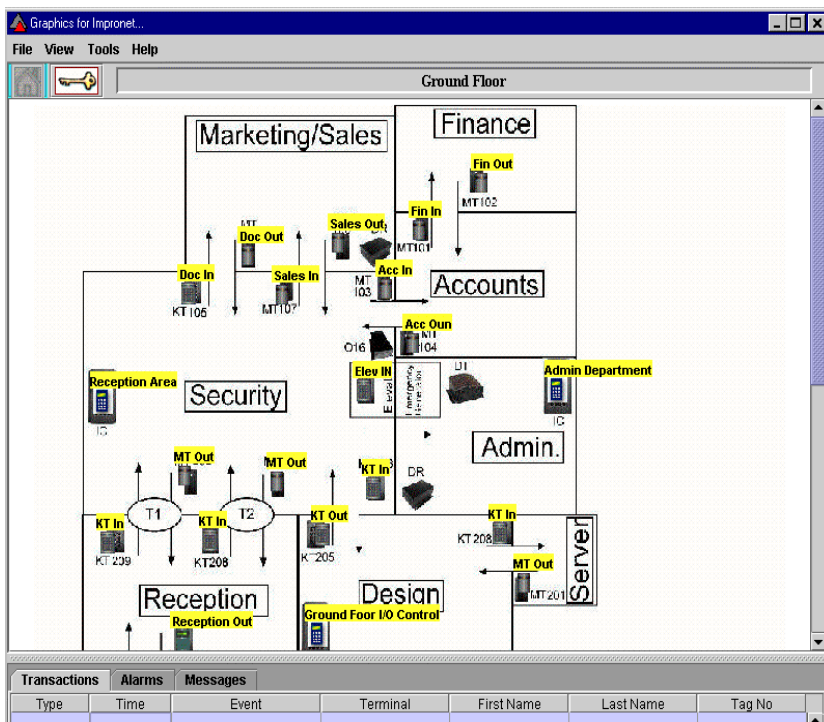
The Logon Screen will display requiring the Username and Password. The Base Plan will appear with the Ground Plan and Building Icons in the position previously installed.



Fill in the Username and Password. The defaults are 'sysdba' and 'masterkey'. Remember that the password used is case sensitive.

The program will start.

The Base Plan will appear with the Ground Plan and Building Icons in the position previously installed.



Base Plan with Icons

Select the Building or Ground Plan required. To select a Ground Plan double click the Ground Plan Icon.

To select a floor to display, Right Click on the Building Icon and then click on the Floor plan number.

The chosen Floor Plan Graphics screen will appear. Right click on Building, Click on the selected floor, and choose the floor plan from the list.

Floor Plan Display



Transactions		Alarms		Messages		
Type	Time	Event	Terminal	First Name	Last Name	Tag No
Access	09:38:34	Allowed Normal In	MT In	Road	Runner	18825561472
Access	09:38:29	Allowed Normal In	MT In	Road	Runner	18825561472
Access	09:35:08	Allowed Normal In	MT In	John	Smith	1882555722
Access	09:18:52	Door Open Sensing Door Closed 3	I16 Door Open Se...			1724725234

Graphics display

The screen is divided into two, top and bottom. The top section is the graphics display of the Floor Plan of the Building. The bottom section displays the runtime messages of what is happening in the system.

If Transactions is selected, then any transaction (entry, exit) as well as Status transactions is displayed as shown below.

Transactions		Alarms		Messages					
Status	Date	Time	Event	Zone	Location	Terminal	Site	ID Name	Message
🔴	2002-02-13	16:10:40	Door Open Se...	Reception Zone	Reception Door	I16 Door Open...	Impro Technol...		
🔴	2002-02-13	16:10:36	Door Open Se...	Reception Zone	Reception Door	I16 Door Open...	Impro Technol...	General Input 1	Enter Admin Area
🔴	2002-02-13	16:10:33	Door Open Se...	Reception Zone	Reception Door	I16 Door Open...	Impro Technol...		
🔴	2002-02-13	16:10:40	Door Open Se...	Reception Zone	Reception Door	I16 Door Open...	Impro Technol...		
🔴	2002-02-13	16:10:36	Door Open Se...	Reception Zone	Reception Door	I16 Door Open...	Impro Technol...	General Input 1	Enter Admin Area
🔴	2002-02-13	16:10:33	Door Open Se...	Reception Zone	Reception Door	I16 Door Open...	Impro Technol...		
🔴	2002-02-13	16:05:48	Door Open Se...	Reception Zone	Reception Door	I16 Door Open...	Impro Technol...		
🟢	2101-08-28	22:41:03							
🟢	2002-02-13	13:57:00	Door Open Se...	Reception Zone	Reception Door	I16 Door Open...	Impro Technol...	General Input 1	Enter Admin Area
🟢	2002-02-13	12:44:37	Door Open Se...	Reception Zone	Reception Door	I16 Door Open...	Impro Technol...	General Input 1	Enter Admin Area

Display transactions

When Alarms is selected, then the most recent alarm states are displayed as shown below. Only ten alarms can be displayed. These are listed in the order of the last 10 unacknowledged alarms. If there are less than 10 unacknowledged alarms the remaining space is filled up to the maximum of 10 lines with recent acknowledged alarms.

Display alarms

Similarly, running messages are displayed, if selected.

Transactions		Alarms		Messages		
Type	Time	Event	Terminal	First Name	Last Name	Tag No

Menu choices

At any time the Base Plan can be displayed by clicking on the Key icon (upper left of screen). The Base Plan will be displayed as illustrated here. To remove the Base Plan click the Close icon, the 'X' (upper right of the Base map).

Display base plan

The Menu choices listed along the top line are: File, View, Tools and Help.



Help

Help displays the Information and has additional choices. Press 'About' to see the Display or, still to be implemented, 'Help' to access the help files.

Pressing 'About' displays the Version, Operating System Software and Copyright.

Click OK to return to the Graphics program.

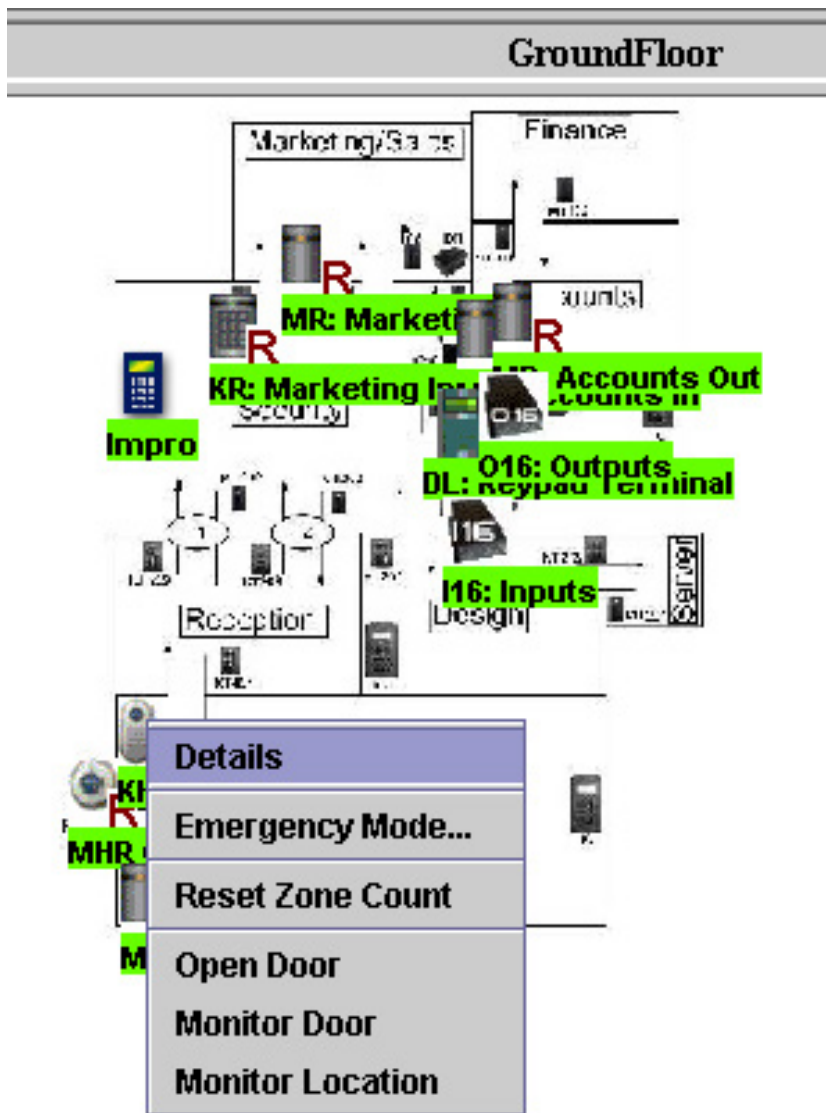
Names and details of each unit

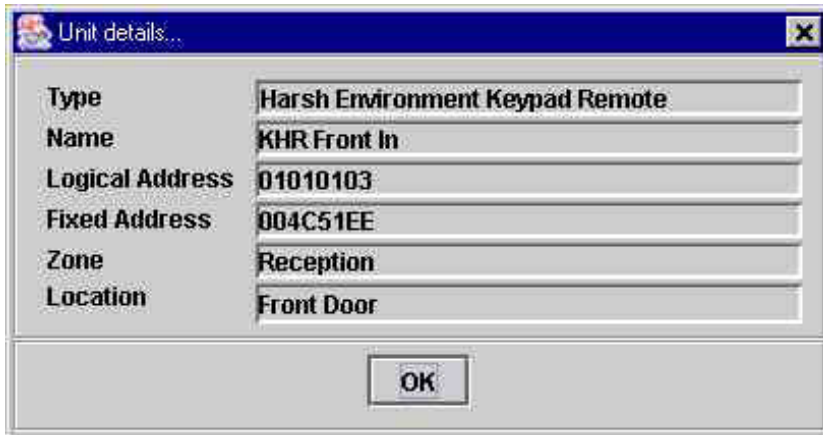
Where the operator wants to check on the name and or details of any unit then by right-clicking on the icon the following sub-menu is displayed:

Names, details action screen

Menu options available are 'Details', 'Emergency Mode', 'Reset Zone Count', 'Open a door', 'Monitor door' and 'Monitor Location'.

NOTE: The menus are slightly different for reader, non-reader, controller, input and camera. Most have a 'Details' tab.

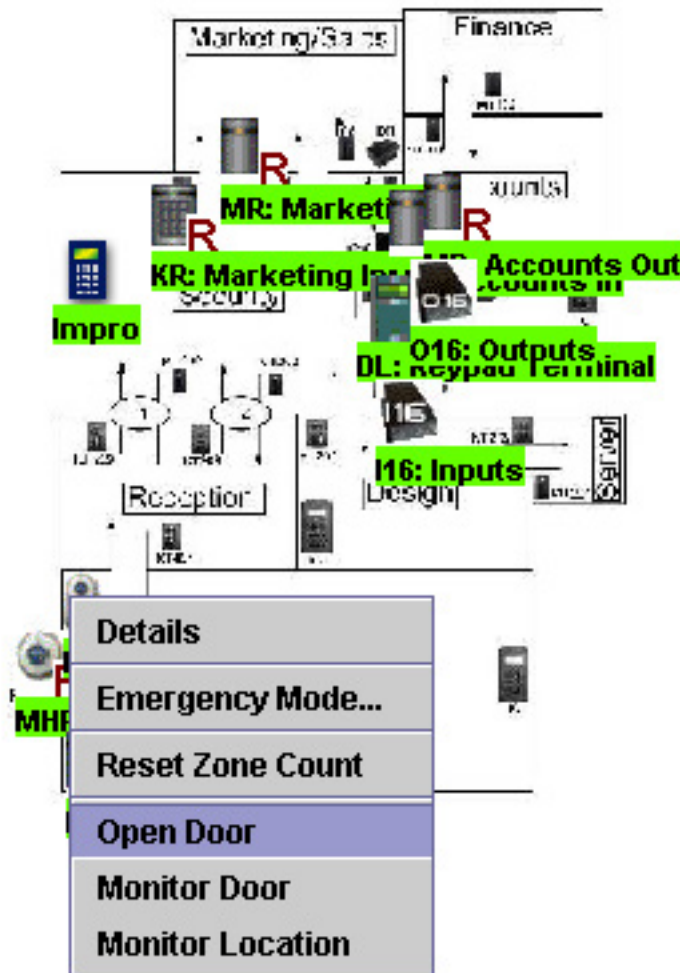




Details

Unit details

By selecting to display the details of the Reception in 'Remote Reader', the information shown above is displayed. The items; 'Emergency mode', 'Reset APB', 'Open Door' and 'Monitor Door' of the previous screen will be discussed later.



Open door

Open door select

Selecting 'Open Door', as shown above, will activate the 'Allowed Actions', if pre-defined in Access Control, for the relevant door. The action as setup will be applied and the door opened.

Alarms

All alarms occurring are reported from the engine. The way the alarm is displayed to the operator is set-up during the design stage.