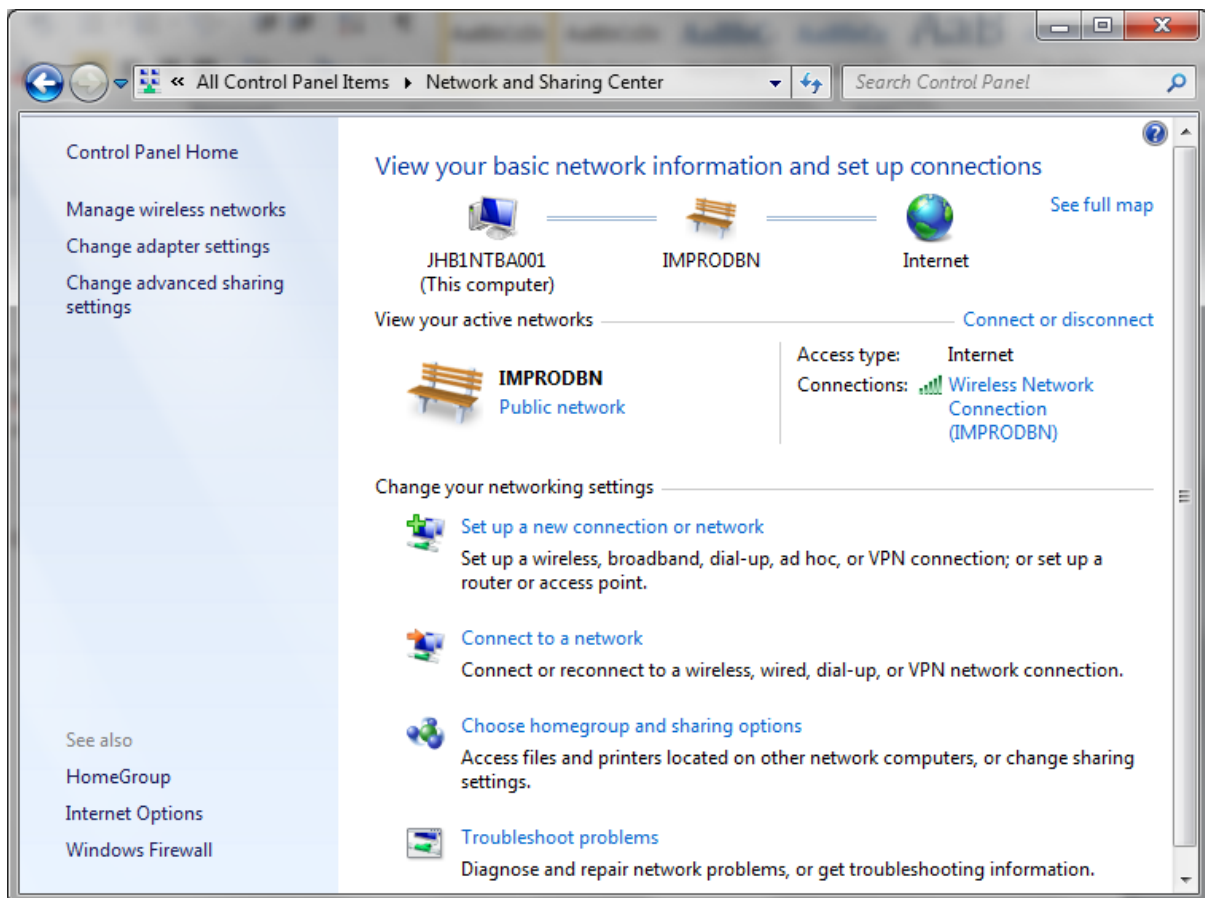


On laptops with more than one network adapter, you may encounter licensing errors if for example the Wifi adapter is disabled when not in range of a known Wifi network.

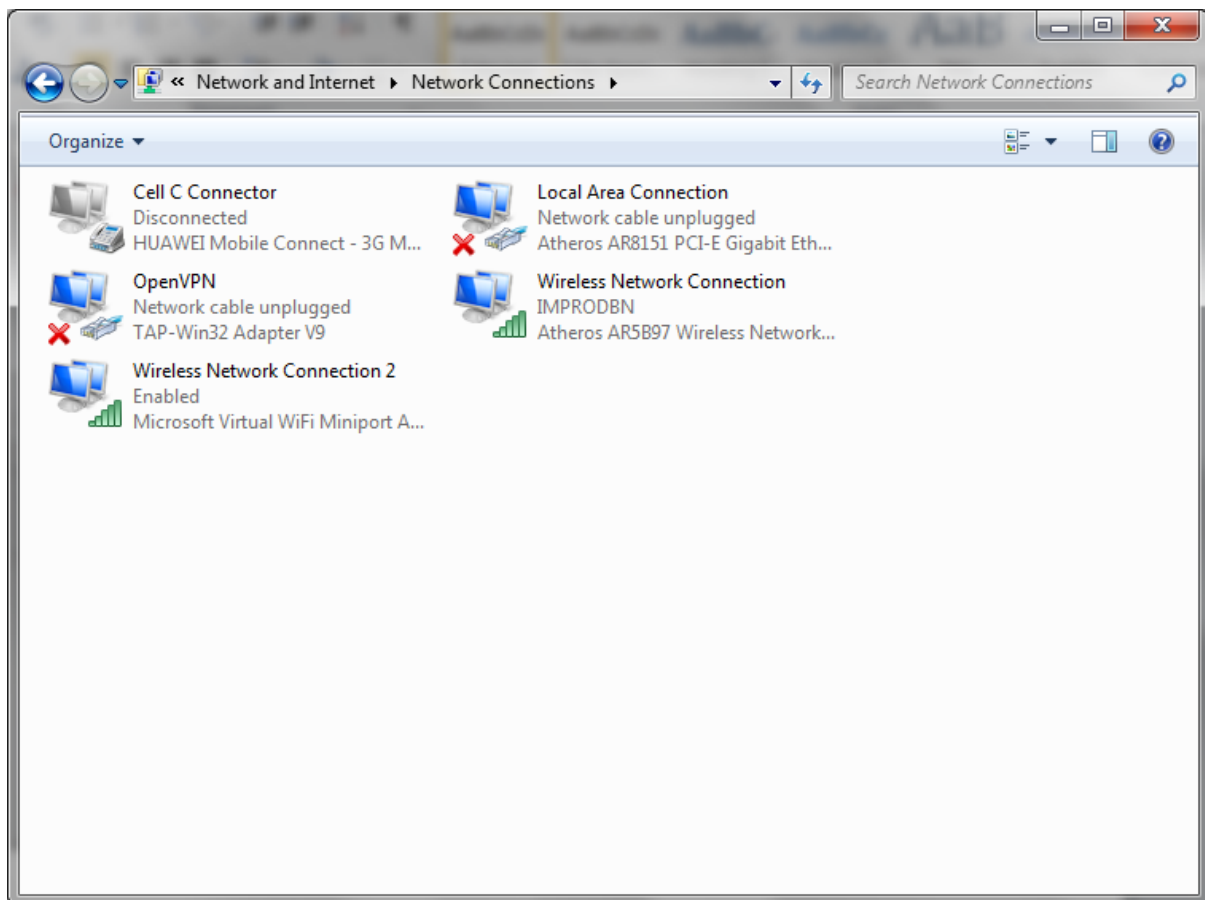
If the software was installed with the Wifi adapter enabled and it was the first adapter picked up during the licensing process, the licensing will no longer work when this adapter is not connected or disabled.

To address this, always ensure that the Local Area Network (or wired connection) is always the first network adapter found by the licensing mechanism.

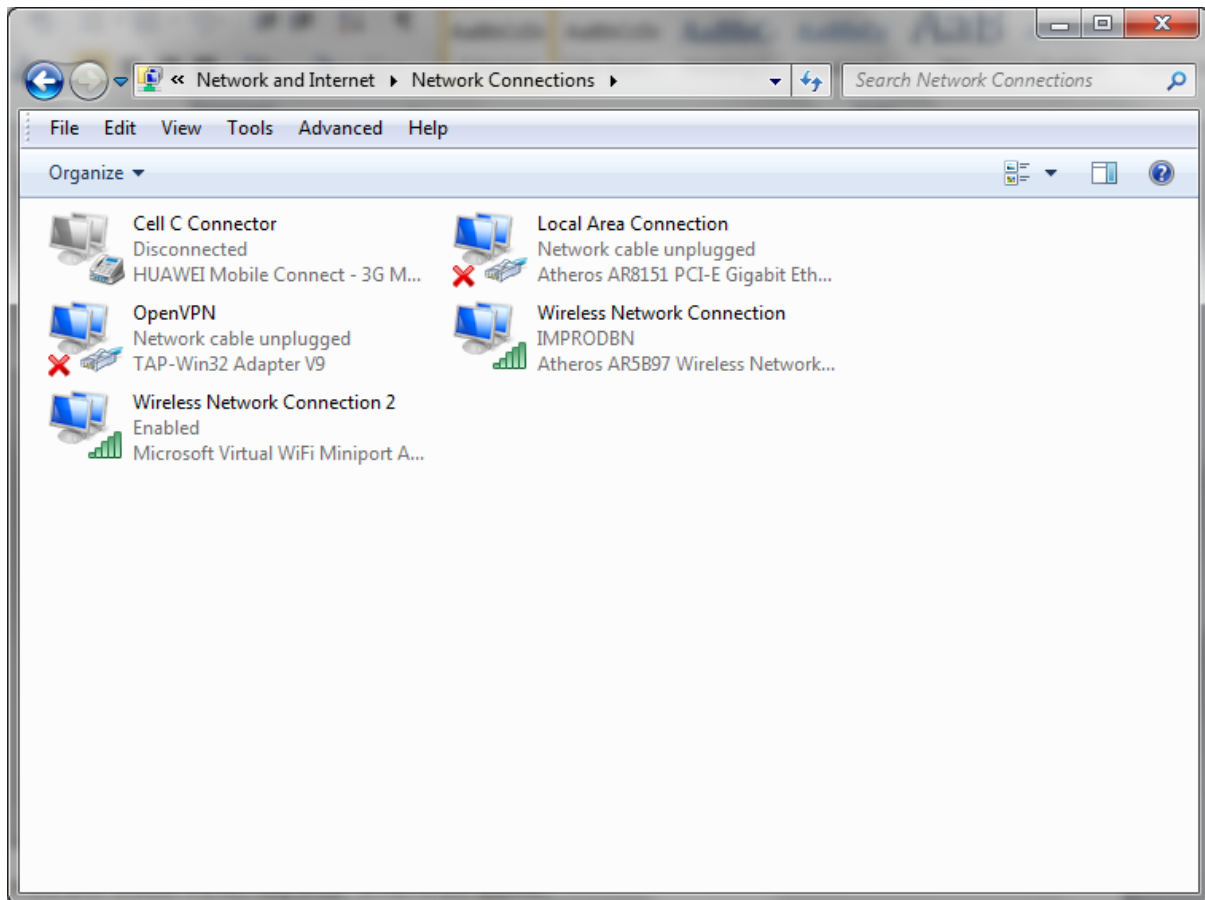
1. Open Control Panel. Open Network and Sharing Center.



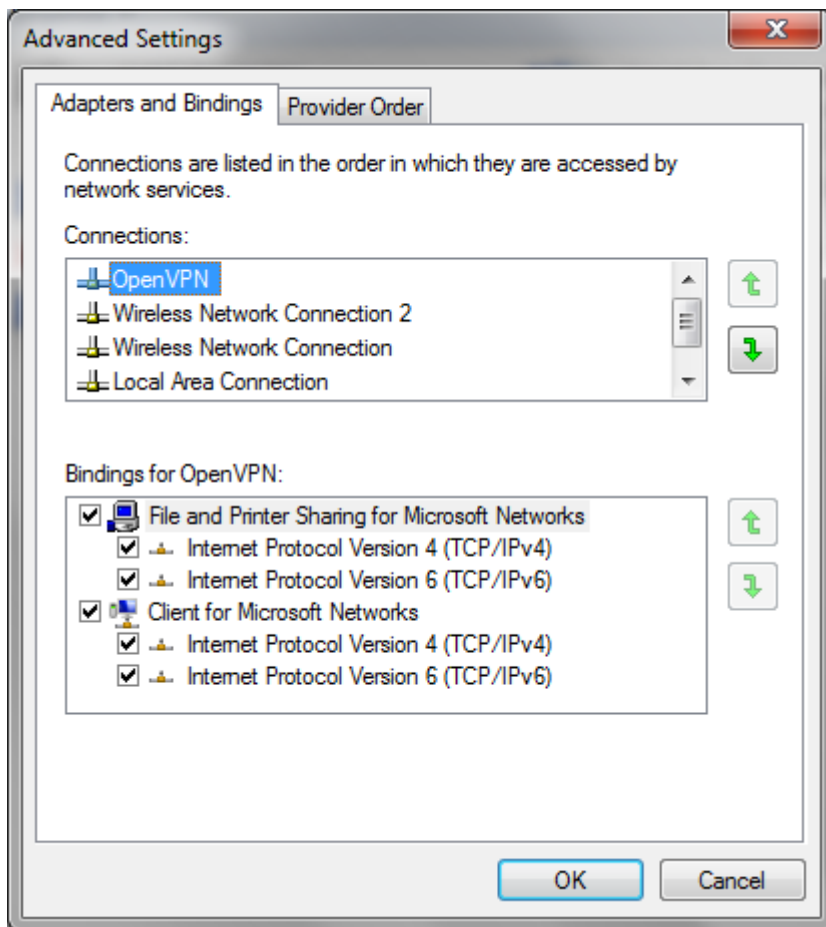
2. On the left, click on [Change adapter settings](#).



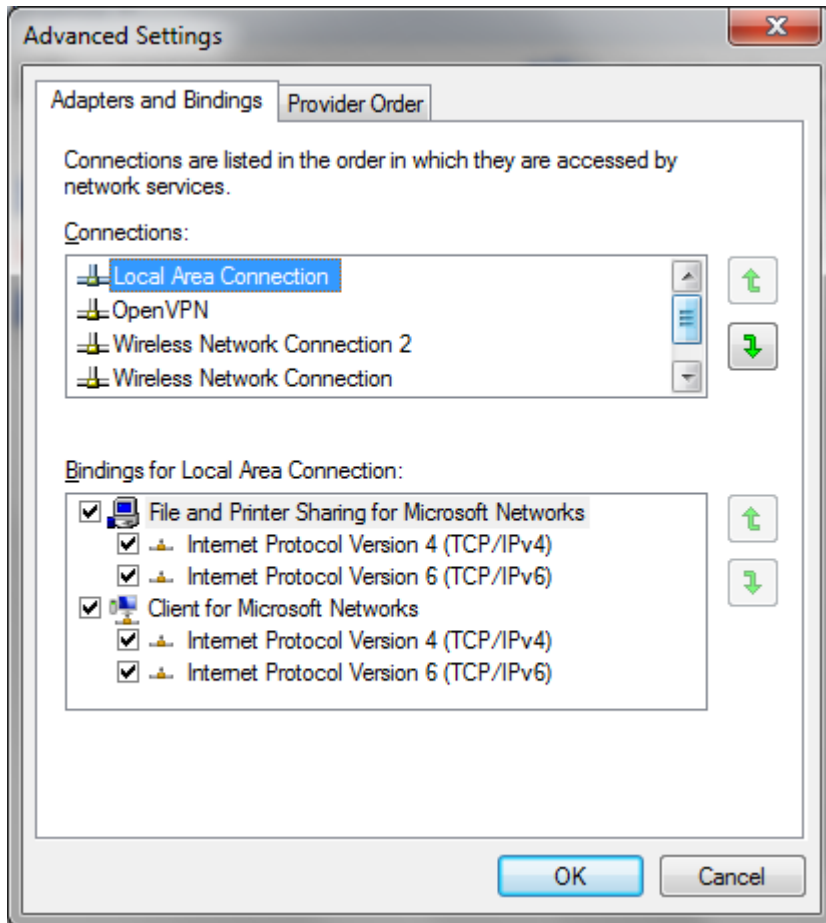
3. Press and release the ALT key once. A menu will appear,



4. Select Advanced on the Menu.



5. In the Advanced Settings dialog you will see a list of all network adapters on the machine. Find the default wired (cable) adapter, typically called Local Area Connection, and move it to the top of the list using the buttons to the right of the list.



This will ensure that the wired connection, unless disabled through Device Manager, is always the first adapter that the software finds and license the software against.